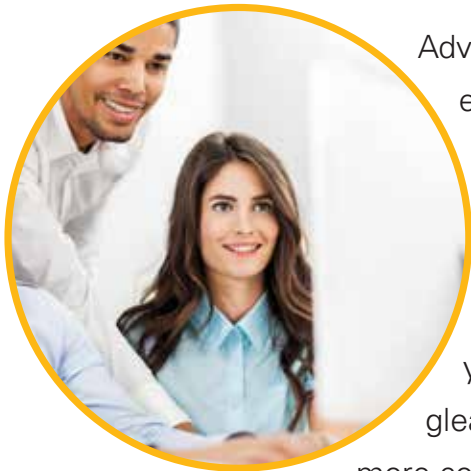




 **AdvanceDispatch** **100% Web-based dispatch solution**

GET THE MOST OUT OF EVERY MINUTE AND EVERY MILE.



AdvanceDispatch is a 100% Web-based solution that increases the efficiency of EMS dispatch operations. With comprehensive computer-aided dispatch and fleet management technologies integrated into one intuitive system, you are able to precisely orchestrate every aspect of your response, from protocol, to routes and scheduling. Through multi-channel communication, you gain complete transparency into your entire field operation, gaining the insights you need to become faster, smarter and more cost-effective.

REQUEST A DEMO

866.864.9033 | medapoint.com/contact-us/advancedispatch

Key Benefits



- Standalone dispatch application, or seamless integration with AdvanceCare™ and AdvanceClaim™ for improved workflows
- The first and only Web-based ProQA Paramount certified dispatch system
- Optional integrated TomTom navigation and fleet management for accelerated response time
- Real-time visibility into vehicle locations, routing, traffic and mileage calculations
- Optional integrated Toolkit Group management solutions for scheduling, certification tracking and resource management from one, central hub
- Multi-channel communication among dispatch, field staff, patient and facility
- Anytime, anywhere access from browser-enabled devices
- Enterprise-level security, and ongoing HIPAA and HITECH compliance
- Insurance verification prior to transport with IntelligentEligibility™
- Auto-generated, stored transports, and patient details for improved efficiency

AdvanceDispatch™